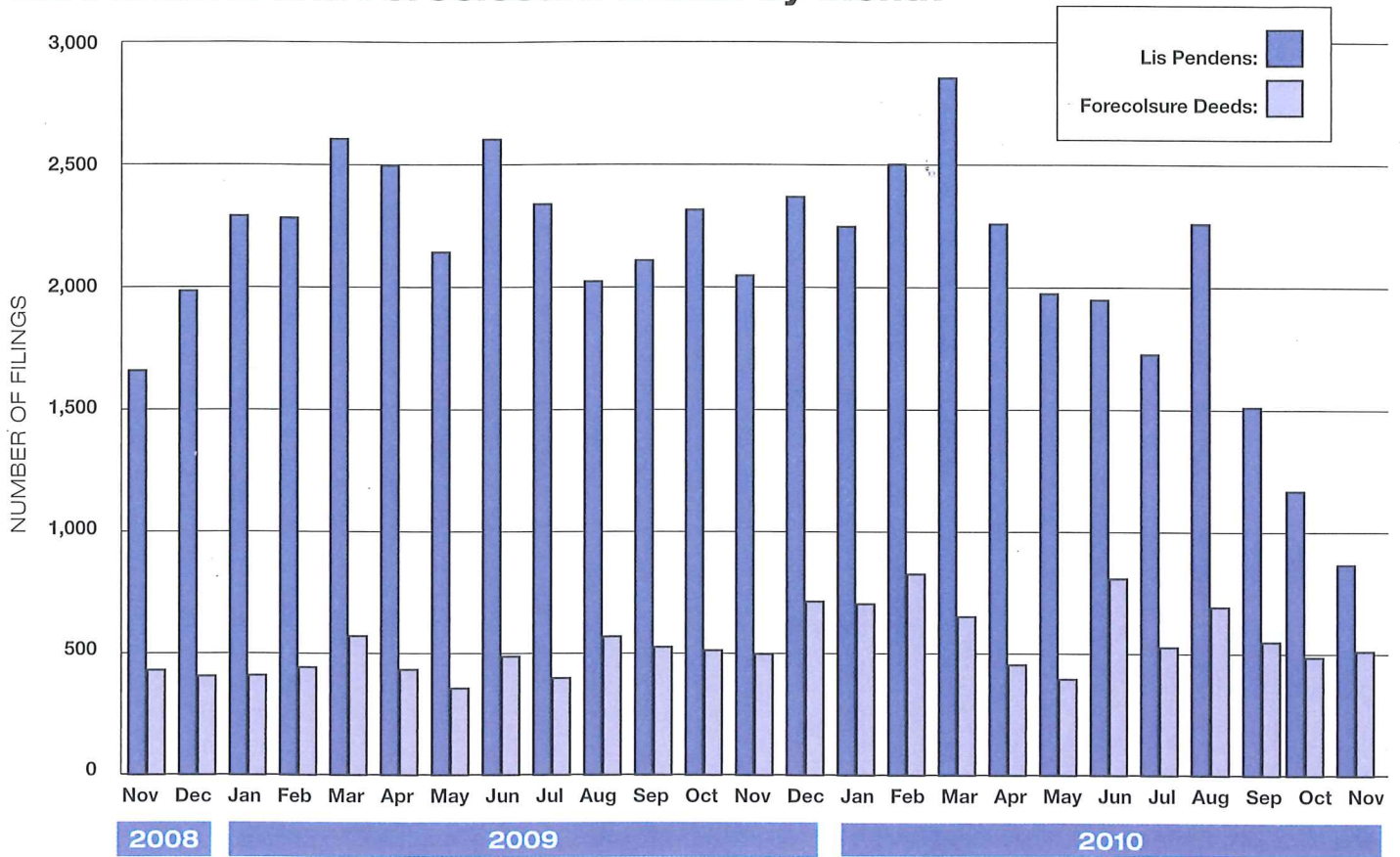
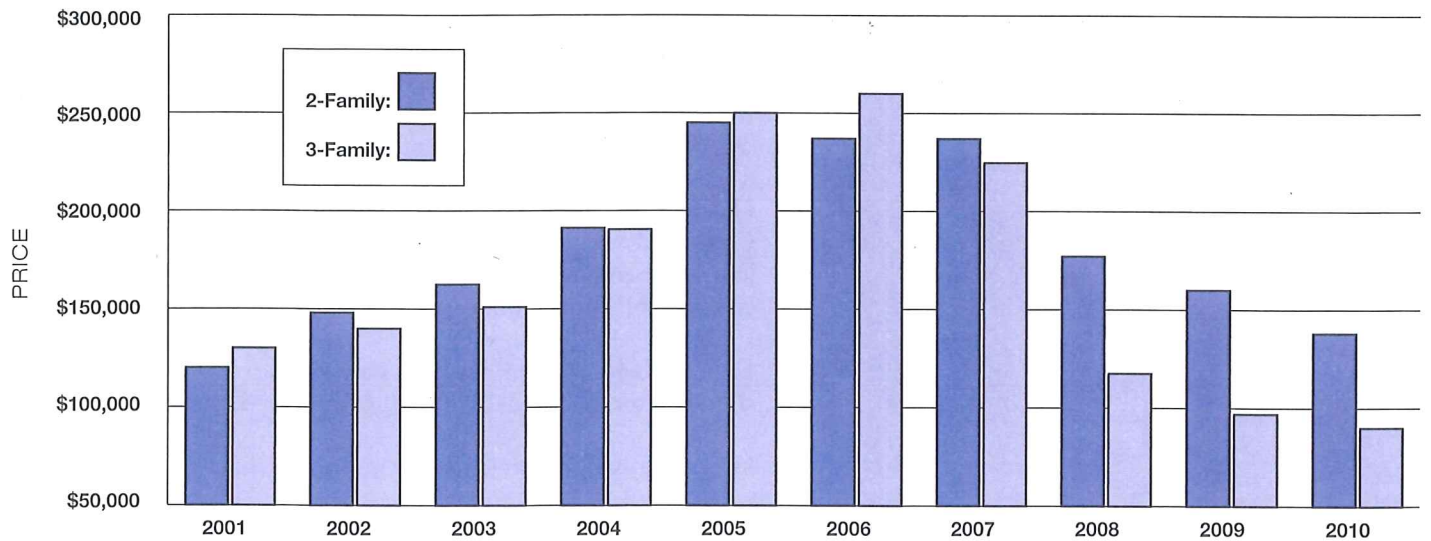


## Lis Pendens and Foreclosure Deeds by Month



Source: The Warren Group

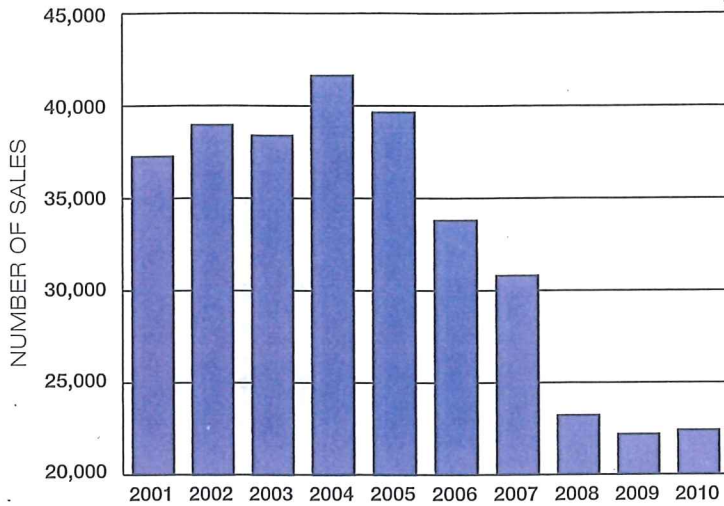
## 2- and 3-Family Median Price



\*Statistics are for January through November of each year

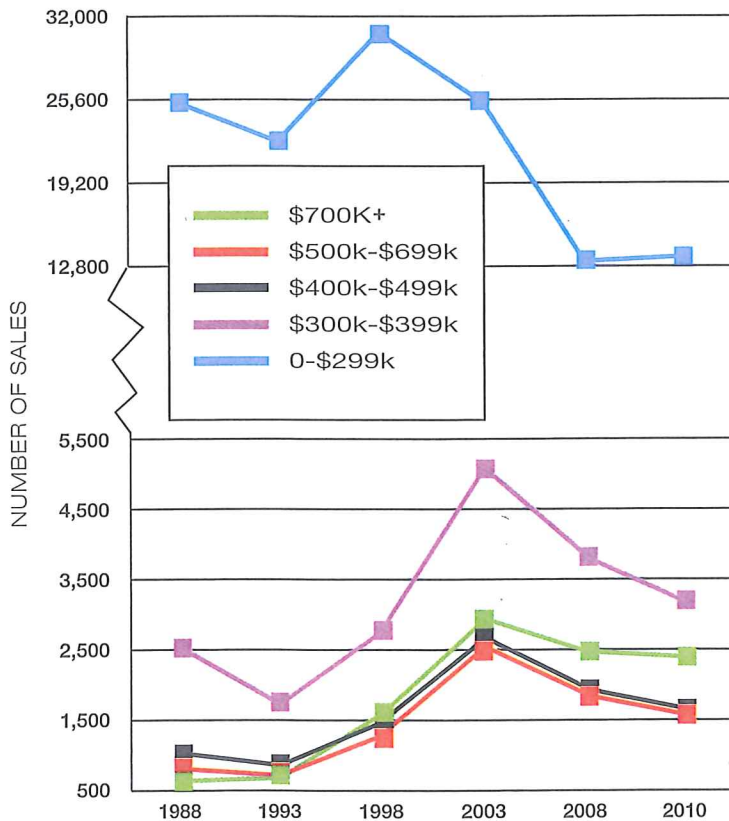
Source: The Warren Group

### 10-Year Single-Family Sales



\*Statistics are for January through November of each year  
Source: The Warren Group

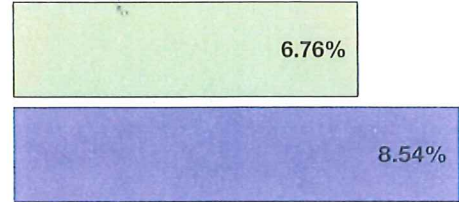
### Number of Single-Family Sales by Price Range



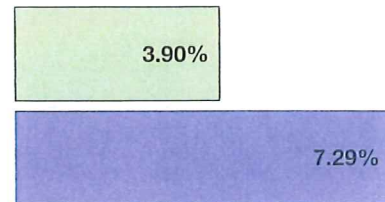
\*Statistics are for January through November of each year  
Source: The Warren Group

### Top Connecticut Lenders: Refinance Mortgages

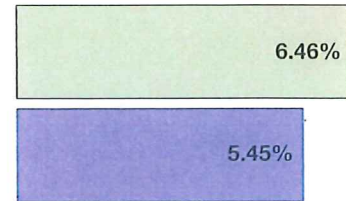
#### Wells Fargo Bank NA



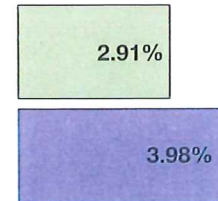
#### Webster Bank



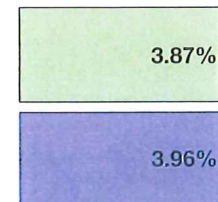
#### Bank of America FSB



#### JP Morgan Chase Bank



#### Peoples United Bank



2009 2010

\*\*Market Share includes loans through mid-December  
Source: The Warren Group